



LIVERMORES
THE ESTATE AGENTS

3 Bedrooms
House - Semi-Detached
Located in Dartford

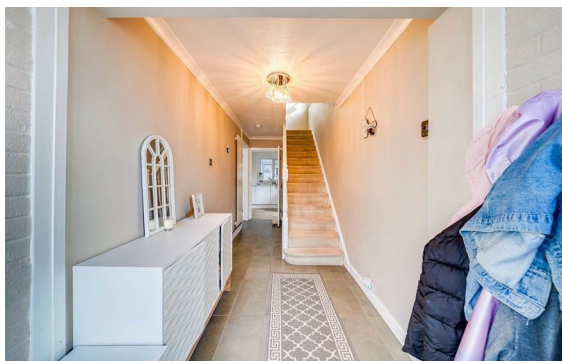
£450,000



dartford@livermores.co.uk

www.livermores.co.uk

01322 228090



1 Hythe Street
Dartford
Kent
DA1 1BE

01322 228090

dartford@livermores.co.uk

www.livermores.co.uk

GUIDE PRICE £450,000 - £475,000.

Situated within the highly sought-after Fleet Estate, this well-presented three-bedroom semi-detached home offers spacious and versatile accommodation, making it an ideal purchase for families and commuters alike.

The property boasts a sizeable lounge area, a fitted kitchen-diner perfect for entertaining, and a bright conservatory overlooking the rear garden. Upstairs, there are three well-proportioned bedrooms and a family bathroom.

Externally, the home benefits from off-street parking and a garage, while also offering excellent potential to extend (subject to the necessary planning permissions).

Energy Efficiency Rating: D

Agents Note: Whilst every care has been taken to prepare these particulars, they are for guidance purposes only. All measurements are approximate and are for general guidance purposes only and whilst every care has been taken to ensure their accuracy, they should not be relied upon and potential buyers/tenants are advised to recheck the measurements.